



REFERENCE GUIDE

TIMETRAX EZ PRODUCT & SOFTWARE LICENSING AGREEMENT

Copyright © 2001-2006 Pyramid Technologies, LLC

Portions of this program Copyright © 1991-2005 Microsoft Corp.

Portions of the report generation software are distributed under a licensing agreement with Data Dynamics, Ltd.

Portions of this program Copyright © 1994-2000 eHelp Corp. All rights reserved.

Portions of this program Copyright © 1990-2005 Info-ZIP, and distributed under license dated 2005-Feb-10.

Portions of this program Copyright © 1999 vbAccelerator.com, and distributed under their Software License Version 1.0 dated 2002:

This product includes software developed by vbAccelerator (<http://vbaccelerator.com/>).

Warning: This computer program is protected by copyright law and international treaties. Unauthorized reproduction or distribution of this program, or any portion of it, may result in severe civil and criminal penalties, and will be prosecuted to the maximum extent possible under law.

END-USER LICENSE AGREEMENT FOR TIMETRAX EZ® TIME RECORDER & SOFTWARE MANAGER

IMPORTANT-READ CAREFULLY: This Pyramid Technologies, LLC. End-User License Agreement (“EULA”) is a legal agreement between you (either an individual person or a single legal entity, who will be referred to in this EULA as “You”) and Pyramid Technologies, LLC. for the Pyramid Technologies, LLC. TimeTrax EZ Time Recorder & Software Manager that accompanies this EULA, including any associated media, printed materials and electronic documentation (the “TimeTrax EZ software”). The TimeTrax EZ software also includes any software updates, add-on components, web services and/or supplements that Pyramid Technologies, LLC. may provide to You or make available to You after the date You obtain Your initial copy of the TimeTrax EZ software to the extent that such items are not accompanied by a separate license agreement or terms of use. By installing, copying, downloading, accessing or otherwise using the TimeTrax EZ software, You agree to be bound by the terms of this EULA. If You do not agree to the terms of this EULA, do not install, access or use the TimeTrax EZ software; in such event the original purchaser may, however, return it to the place of purchase within thirty days of the date of original purchase for a full refund.

TIMETRAX EZ SOFTWARE LICENSE

The TimeTrax EZ software is protected by intellectual property laws and treaties. The TimeTrax EZ software is licensed, not sold.

1) GRANT OF LICENSE. This Section of the EULA describes your general rights to install and use the TimeTrax EZ software. The license rights described in this section are subject to all other terms and conditions of this EULA.

General License Grant to Install and User TimeTrax EZ software. You may install and use one copy of the TimeTrax EZ software on a single computer but only for use in the number of written language(s) that you selected at time of first installation and in which you have acquired rights. You can share a copy of the TimeTrax EZ software installed on a common build/test machine provided that You or Your entity has purchased a single license for that common build/test machine and each developer using it has a license. TimeTrax EZ software is an exception to this clause and may not be shared. A license for the TimeTrax EZ software may not be shared.

Redistributable File(s). Notwithstanding the terms of this EULA to the contrary, certain of the executable files of the TimeTrax EZ software may be redistributed by you to the extent required for the permitted operation of the application(s) software installation code created by you while using the TimeTrax EZ software. The redistributable file(s) are limited to those specifically identified as “Redistributables” in the media, printed materials, and “online” or electronic documentation accompanying the particular embodiment of the TimeTrax EZ software.

2) DESCRIPTION OF OTHER RIGHTS AND LIMITATIONS.

Limitations on Reverse Engineering, Decompilation, and Disassembly. You may not modify, reverse engineer, decompile, or disassemble the TimeTrax EZ software, except and only to the extent that such activity is expressly permitted by applicable law notwithstanding this limitation. The TimeTrax EZ software is licensed as a single product. Except with respect to the Redistributables, its component parts may not be separated for use on more than one computer.

Not for Resale Software. If the TimeTrax EZ software is labeled “Not for Resale” or “NFR” or “Evaluation Copy” or “30 Day Complimentary,” then, notwithstanding other sections of this EULA, you may not use the TimeTrax EZ software for commercial purposes nor sell, or otherwise transfer it for value. Commercial purposes include the use of the TimeTrax EZ software to create publicly distributed computer software.

No rental, leasing or commercial hosting.

You may not rent, lease, lend or provide commercial hosting services to third parties with the TimeTrax EZ software.

Software Transfer. You may permanently and wholly transfer all of your rights under this EULA, provided you (a) retain no copies (whole or partial), (b) permanently and wholly transfer any and all of the TimeTrax EZ software (including all component parts, the media and printed materials, any upgrades, this EULA, and, if applicable, the Certificate of Authenticity) to the recipient, and (c) the recipient first agrees to abide by all of the terms of this EULA. If the TimeTrax EZ software is an upgrade, any transfer must include any and all prior versions of the TimeTrax EZ software and any and all of your rights therein, if any.

Support Services. Pyramid Technologies, LLC. may provide you with support services related to the TimeTrax EZ software ("Support Services"). The provision and use of Support Services is governed by the Pyramid Technologies, LLC. policies and programs described in the TimeTrax EZ software user manual and/or in "online" documentation. Any supplemental software code provided to you as part of the Support Services shall be considered part of the TimeTrax EZ software and subject to the terms and conditions of this EULA. With respect to technical information you provide to Pyramid Technologies, LLC. as part of the Support Services, Pyramid Technologies, LLC. may use such information for its business purposes, including for product updates and development.

Termination. Without prejudice to any of Pyramid Technologies, LLC.'s other rights, Pyramid Technologies, LLC. may terminate this EULA if you fail to comply with the terms and conditions of this EULA. In such event, you must destroy any and all copies of the TimeTrax EZ software and all of its component parts.

3) UPGRADES and SUBSCRIPTION. If the TimeTrax EZ software is labeled or otherwise identified by Pyramid Technologies, LLC. as an "upgrade" or "subscription," you must be properly licensed to use a product identified by Pyramid Technologies, LLC. as being eligible for the upgrade in order to use the TimeTrax EZ software. A TimeTrax EZ software, labeled or otherwise identified by Pyramid Technologies, LLC. as an upgrade, replaces and/or supplements the product that formed the basis for your eligibility for such upgrade. You may use the resulting upgraded product only in accordance with the terms of this EULA. If the TimeTrax EZ software is an upgrade of a component of a package of software programs that you licensed as a single product, the TimeTrax EZ software may be used and transferred only as part of that single product package and may not be separated for use on more than one computer.

4) COPYRIGHT AND TRADEMARKS.

All title, trademarks and copyrights in and pertaining to the TimeTrax EZ software, the accompanying printed materials, and any copies of the TimeTrax EZ software, are owned or licensed by Pyramid Technologies, LLC. or its affiliated companies. The TimeTrax EZ software is protected by copyright and trademark laws and international treaty provisions. You may make one copy of the TimeTrax EZ software for back-up and archival purposes. You may not copy the printed materials accompanying the TimeTrax EZ software.

You may not remove, modify or alter any Pyramid Technologies, LLC. copyright or trademark notice or the Pyramid Technologies, LLC. name from any part of the TimeTrax EZ software, including but not limited to any such notices contained in the physical and/or electronic media or documentation, in the Pyramid Technologies, LLC. Setup Wizard dialogue or 'about' boxes, in any of the runtime resources and/or in any web-presence or web-enabled notices, code or other embodiments originally contained in or otherwise created by the TimeTrax EZ software.

5) DUAL-MEDIA SOFTWARE. You may receive the TimeTrax EZ software in more than one medium. Regardless of the type or size of the medium you receive, you may use only that one medium that is appropriate for your single computer. You may not use or install the other medium on another computer, including but not limited to portable computers under the exclusive control of the registered developer. You may not loan, rent, lease, or otherwise transfer the other medium to another user, except as part of the permanent transfer (as provided above) of the TimeTrax EZ software.

6) U. S. GOVERNMENT RESTRICTED RIGHTS. The TimeTrax EZ software and documentation are provided with RESTRICTED RIGHTS. Use, duplication, or disclosure by the U. S. Government is subject to restrictions as set forth in subparagraph C (1)(ii) of the Rights in Technical Data and Computer Software clause at DFARS 252.227-7013 or subparagraphs (c) (1) and (2) of the Commercial Computer Software Restricted Rights at 48 CFR 52.227-19, as applicable. Manufacturer is: Pyramid Technologies LLC., 48 Elm Street, Meriden, CT, 06450, USA.

7) APPLICABLE LAW. This EULA is governed by the laws of the State of Connecticut. Should you have any questions concerning this EULA, or if you desire to contact PYRAMID TECHNOLOGIES for any reason, please contact the PYRAMID distributor serving you or write: PYRAMID TECHNOLOGIES LLC. , 48 Elm Street, Meriden, CT, 06450; Or Call Toll Free 1-888-479-7264

8) LIMITED WARRANTY. Pyramid Technologies, LLC. warrants that (a) the TimeTrax EZ software will, for a period of ninety (90) days from the date of delivery, perform substantially in accordance with Pyramid Technologies, LLC.'s written materials accompanying it, and (b) any Support Services provided by Pyramid Technologies, LLC. shall be substantially as described in applicable written materials provided to you by Pyramid Technologies, LLC.

CUSTOMER REMEDIES. In the event of any breach of warranty or other duty owed by Pyramid Technologies, LLC., Pyramid Technologies, LLC.'s and its suppliers' entire liability and your exclusive remedy shall be, at Pyramid Technologies, LLC.'s option, either (a) return of the price paid by you for the TimeTrax EZ software (not to exceed the suggested U.S. retail price) if any, (b) repair or replacement of the defective TimeTrax EZ software or (c) re-performance of the Support Services. This Limited Warranty is void if failure of the TimeTrax EZ software has resulted from accident, abuse, or misapplication. Any replacement TimeTrax EZ software will be warranted for the remainder of the original warranty period or thirty (30) days, whichever is longer.

NO OTHER WARRANTIES. TO THE MAXIMUM EXTENT PERMITTED BY APPLICABLE LAW, PYRAMID TECHNOLOGIES, LLC. AND ITS SUPPLIERS DISCLAIM ALL OTHER WARRANTIES AND CONDITIONS, EITHER EXPRESS OR IMPLIED, INCLUDING, BUT NOT LIMITED TO, IMPLIED WARRANTIES OF MERCHANTABILITY, FITNESS FOR A PARTICULAR PURPOSE, TITLE AND NON-INFRINGEMENT, WITH REGARD TO THE TIMETRAX EZ SOFTWARE AND THE PROVISION OF OR FAILURE TO PROVIDE SUPPORT SERVICES. THE LIMITED WARRANTY GIVES YOU SPECIFIC LEGAL RIGHTS. YOU MAY HAVE OTHERS, WHICH VARY FROM STATE/JURISDICTION TO STATE/JURISDICTION. Some states and jurisdictions do not allow disclaimers of or limitations on the duration of an implied warranty, so the above limitation may not apply to you. To the extent implied warranties may not be entirely disclaimed but implied warranty limitations are allowed by applicable law, implied warranties on the TimeTrax EZ software, if any, are limited to ninety (90) days.

9) LIMITATION OF LIABILITY. TO THE MAXIMUM EXTENT PERMITTED BY APPLICABLE LAW, IN NO EVENT SHALL PYRAMID TECHNOLOGIES, LLC. OR ITS SUPPLIERS BE LIABLE FOR ANY SPECIAL, INCIDENTAL, INDIRECT, OR CONSEQUENTIAL DAMAGES WHATSOEVER (INCLUDING, WITHOUT LIMITATION, DAMAGES FOR LOSS OF BUSINESS PROFITS, BUSINESS INTERRUPTION, LOSS OF BUSINESS INFORMATION, OR ANY OTHER PECUNIARY LOSS) ARISING OUT OF THE USE OF OR INABILITY TO USE THE TIMETRAX EZ SOFTWARE OR THE PROVISION OF OR FAILURE TO PROVIDE SUPPORT SERVICES, EVEN IF PYRAMID TECHNOLOGIES, LLC. HAS BEEN ADVISED OF THE POSSIBILITY OF SUCH DAMAGES. IN ANY CASE, PYRAMID TECHNOLOGIES, LLC.'S ENTIRE LIABILITY UNDER ANY PROVISION OF THIS EULA SHALL BE LIMITED TO THE AMOUNT YOU ACTUALLY PAID TO PYRAMID TECHNOLOGIES, LLC. FOR THE TIMETRAX EZ SOFTWARE OR SERVICE THAT DIRECTLY CAUSED THE DAMAGE. BECAUSE SOME STATES AND JURISDICTIONS DO NOT ALLOW THE EXCLUSION OR LIMITATION OF LIABILITY, THE ABOVE LIMITATION MAY NOT APPLY TO YOU.

TABLE OF CONTENTS

What's in the Box? 1

Minimum System Requirements 1

Cable Installation 2

Introduction 3

Features 3

Using the Time Recorder 3

Using Employee Cards 3

Installing the Software 4

Log In Window 6

Initial Communication Form 6

TimeTrax EZ Setup Wizard 7

Payroll Setup 7

Pay Categories Setup 8

Employee Groups Setup 8

Advanced Employee Groups Setup 10

Employee Details Setup 11

Vertical Icon Bar 12

Configure Tab Including Date/Time Setup 13

Automatic Backup 14

TimeTrax Security 14

Time Source & Sync Standards 15

Setup Tab	15
Payroll Tab	15
Payroll Details	16
Assert Global Special Pay	17
Workdays and Workweek	17
Reports/Exports	18
Archive Reports	19
Employee Details	19
Importing Employees From Quickbooks	20
ADP Users	22
Generic Text Users	23
Paychex Preview Users	24
Paychex Paylink Users	25
Prodata Evolution Users	26
Quickbooks 2003 + Users	27
Quickbooks Pre-2002 Users	28
Quickbooks Pro Timer Export Users	30
Troubleshooting Guide	32
Warranty Information	39
Parts List	40
Index	41



WHAT'S IN THE BOX?

- TimeTrax EZ time recorder
- AC Power supply
- 50' flat Cat5 communications cable with RJ45 connectors on both ends
- RJ45 to 9-pin (DB9) serial port adapter
- User's Manual with EZ Installation Guide
- Diagnostic (loop-back) plug – **DO NOT DISCARD, save for future use.**
- Stainless steel mounting bracket
- Mounting bracket release key
- Mounting screws (#10 x 1" long – Qty. 4)
- Employee swipe cards (numbered 1-25)
- CD-ROM with TimeTrax EZ and online help

MINIMUM SYSTEM REQUIREMENTS

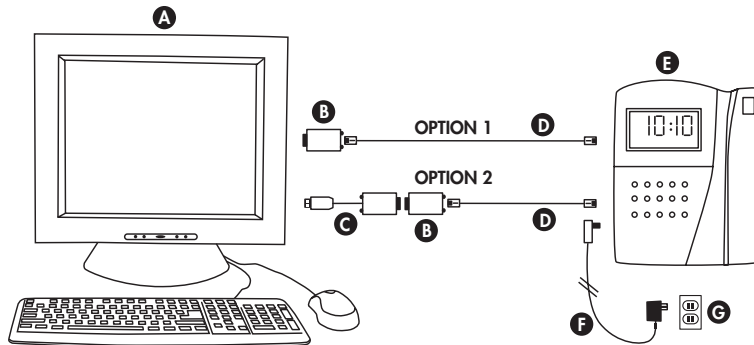
- PC with a Pentium® class or faster processor
- 128 megabytes of RAM
- 1 gigabyte of free space on the system's hard drive
- CD-ROM drive
- Monitor and video card capable of 800x600, 16-bit color resolution
- Mouse or other pointing device
- Either: 9-pin serial port *or* USB port (via an optional adapter)
- Windows® 98SE, Windows 2000 Professional, Windows XP Home or Professional
- Printer (if hard copy reports are desired)

NEED TO PLACE AN ORDER?

For additional cards, cable extensions, and other supplies, call Pyramid Technologies, LLC at:

(888) 479-7264

CABLE INSTALLATION



PARTS REFERENCE

- A** Central PC
- B** RJ45 to DB9 Adapter (PN 41400)
- C** USB to RS232 Adapter (PN 41685)
- D** 50' White Flat Cat5 Cable (PN 1269)
- E** TimeTrax EZ (PN TIMETRAXEZK)
- F** AC Power Supply (included in shipping)
- G** Standard 115v Wall Power Outlet

CONNECTING POWER: Connect the AC power supply (fig. F) to a standard 115v wall power outlet (fig. G) and also to the TimeTrax EZ unit (fig. E).

Two available options for connecting the TimeTrax EZ to your central PC. (fig. A)

OPTION 1: PC has an available Serial 9-pin (COM) port.

Connect the white 50' RJ45 cable (fig. D) to the RJ45/DB9 adapter (fig. B). This will then connect to the back of your PC. (fig. A)

OPTION 2: PC only has a USB port. Converter (fig. C) is sold separately.

Connect the white 50' RJ45 cable (fig. D) to the RJ45/DB9 adapter (fig. B) and then connect the optional RS232/USB adapter (fig. C) to the back of your PC. (fig. A)

INTRODUCTION

Congratulations on your purchase of the Pyramid TimeTrax EZ Time and Attendance System.

TimeTrax EZ takes proven card reader technology and combines it with the powerful TimeTrax EZ software to create a time and attendance solution that is both highly effective and easy to use.

Features

- Standard 25 Employees, upgradeable to 100
- Weekly, Biweekly, Semi-monthly, or Monthly Pay Period
- Automatic overtime calculation
- Pay Interval rounding to 5, 6, 10, or 15 minutes
- Option to automatically deduct unpaid lunches
- Exports out of the box to ADP, PAYCHEX, QuickBooks, and Excel
- Produces a variety of useful reports

Using the Time Recorder

Once the time recorder is installed, the employee punch records that are generated from card punches are stored within the recorder even if those records are uploaded to the TimeTrax EZ database.

The TimeTrax EZ recorder automatically stores the last 6,000 punches; depending on usage the punches can be retrieved on a more or less frequent basis. However, it is recommended that punches should be retrieved on a regular basis for two reasons:

1. The larger the number of new punches retrieved, the longer it takes for downloading to the TimeTrax EZ database.
2. In case of catastrophic equipment failure of the time recorder, such as lightning or violent impact, the punch record is stored in a second place (the PC).

Using Employee Cards

1. Insert the employee card at the top of the slot on the right side of the time recorder. The card must be held with the magnetic stripe to the right and the card firmly in the slot.
2. Rapidly pull the card down through the slot. If the employee number is successfully read, the time recorder will beep and the card number will be displayed briefly on the screen.



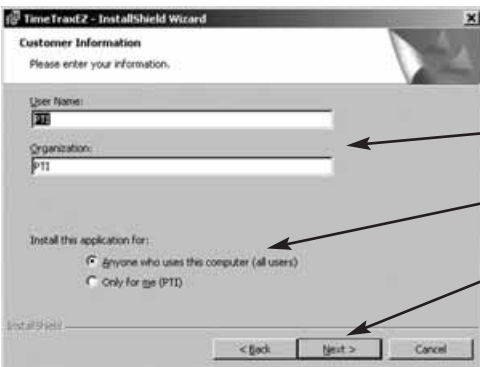
INSTALLING THE SOFTWARE



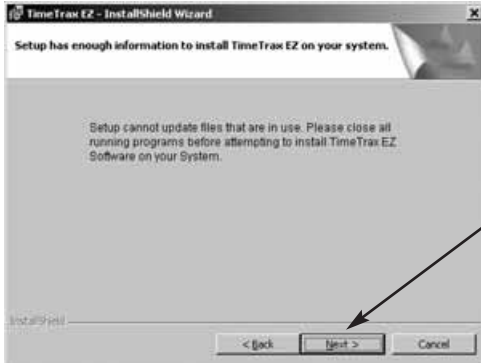
Click NEXT to continue



To accept licensing agreement click NEXT to continue



Enter User Name and Organization.
Choose for whom to install the application.
Click NEXT to continue



Click NEXT to continue



Click INSTALL to begin installation



When installation is complete, click FINISH



Double click the ICON placed on your desktop to begin

LOG IN WINDOW

When the program is launched, you are presented with the **Log In Form**.

Enter ADMIN into
USER NAME field

Enter PTI (uppercase)
into PASSWORD field

INITIAL COMMUNICATION FORM

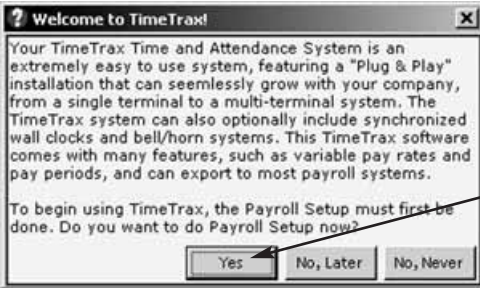
After you successfully log in, the system initializes communications with the time recorder attached to the PC. When this is successfully accomplished, you will see **Recorder Found**.

Port	Model	Pch.Ct
COM 3	PTR8700 VER 5.05	17

Successful Connection

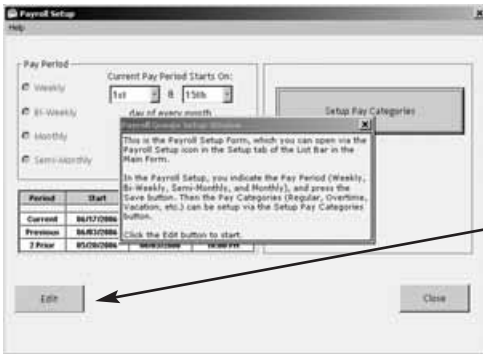
Click OK to continue

TIMETRAX EZ SETUP WIZARD

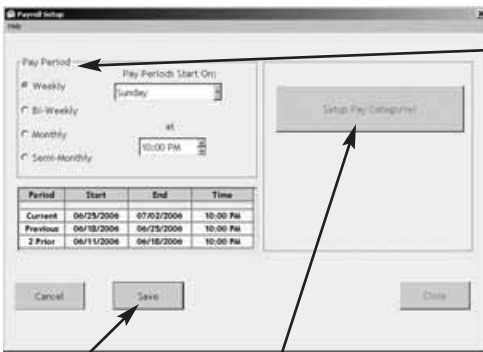


Click YES to continue

PAYROLL SETUP



Click the EDIT button to start



Select your Pay Period.
Note: Hourly employees paid on a Monthly and Semi-Monthly basis could accrue overtime in one Pay Period that is applied to the next.

Select the day that your Pay Period starts on.

Select the time to begin the new Pay Period.
The time selected should be after the last out-punch of the previous pay period and before the first in-punch of the current pay period.

Click SAVE to continue

Once saved, click on SETUP PAY CATEGORIES

PAY CATEGORIES SETUP

Pay categories are classifications of employee hours. Click EDIT to begin.

PAY CATEGORY: Predefined classifications of employee hours.
(Holiday, Other, Overtime 1.5, Overtime 2, Regular, Sick, Vacation)

RATE MULTIPLIER: The rate at which the Pay Category is paid; i.e., Holiday would be rate multiplier 1 if the employee is paid regular rate for the day. If you choose to pay time and a half, the rate multiplier is 1.5.

APPLY TO WEEKLY OVERTIME: Check box if category hours can accrue towards overtime.

EDIT allows access to the screen for editing purposes. It also doubles as SAVE. When your selections are complete, click Close to continue.

CATEGORY CODE: Provided by the payroll company if you are using one. Ensures proper transfer of information from the pay category in TimeTrax EZ to your payroll service provider.

EMPLOYEE GROUPS SETUP

Click YES to continue

Click EDIT to start.

The screenshot shows the 'Employee Group' configuration window. It includes a table for 'Pay Period' with columns for Period, Start, End, and Time. Below the table are fields for 'Max Hours Before Missed Punch Assumed' (Hours: 11, Minutes: 0) and 'Filter-Out Punches Closer Than' (0 Sec). The 'Overtime' section has three sub-sections: 'Daily Overtime', 'Weekly Overtime', and 'Monthly/Semi-Monthly Pay Periods Only'. Each sub-section has checkboxes for 'Pay time + 1/2 for working over' and 'Pay double time for working over'. Callout boxes point to these sections with the following text:

- DAILY OVERTIME:** Choose how it is paid and after how many hours.
- WEEKLY OVERTIME:** Choose how it is paid and after how many hours.
- MONTHLY/SEMI-MONTHLY PAY PERIODS ONLY:** Must select the day and time that the workweek begins to calculate overtime correctly.

Max Hours Before Missed Punch Assumed: The maximum number of hours an employee can work without punching before the system assumes the employee forgot to punch out.

Pay Interval Round: Click Enable if you wish to use Pay Interval Rounding. Divides each clock hour into intervals of 5, 6, 10, or 15 minutes. The software automatically edits the punch time so that it is set to the start of the interval that contains the actual time. For example, at 5-minute intervals, 7:02 am becomes 7:00 AM and 7:07 AM becomes 7:05 AM. Leave box unchecked for no Pay Interval Rounding.

Filter-Out Punches Closer Than: This will eliminate duplicate punches within a user definable time; i.e., If an employee goes to the time clock and punches their badge, forgets that they punched it, and punches again, this filter will automatically eliminate the second punch if it is within the filter time defined. Pyramid recommends using 90-seconds.

ADVANCED EMPLOYEE GROUPS SETUP

Employee Groups Advanced can be used when the standard Employee Groups is not sufficient for an organization.

Shift Warnings: Allows the employee to punch at any time, but will generate a warning when an employee punches outside of the defined shift. The user can define the warning based on minutes before or after the shift starts or ends.

Saturday Overtime: Allows the employer to specify whether or not Saturday is automatically overtime regardless of the number of hours worked during the regular pay period.

Sunday Overtime: Allows the employer to specify whether or not Sunday is automatically overtime regardless of the number of hours worked during the regular pay period.

7th Day Worked Overtime: Allows the employer to specify whether or not an employee who works 7 consecutive days is eligible for overtime regardless of hours worked during the regular pay period.

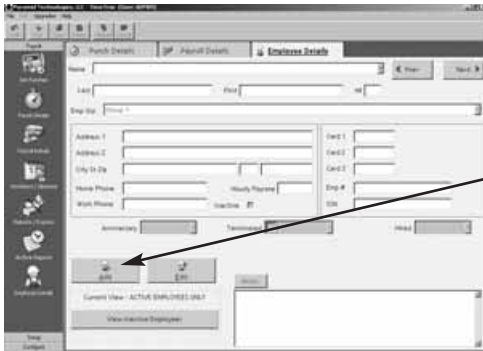
Lunch Rules: Allows the employer to specify whether an employee must punch out or have lunches automatically deducted or any combination of both. You can choose both *Automatic Lunch Deductions* and *No Deductions*, if the employees within your Employee Group will perform multiple activities where may not be able to consistently punch.

Enable Lunch Warnings: Allows the employee to punch at any time, but will generate a warning when an employee punches outside of the defined lunch. The user can define the warning based on minutes before or after the lunch starts or ends.

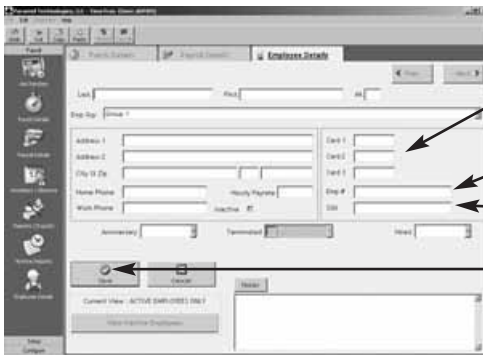
Grace Window: The number of minutes that the employer will allow before a warning is generated for lunch punches.

EMPLOYEE DETAILS SETUP

This section is where individual employee information is stored. (For QuickBooks users, please see the section on Importing Employees from QuickBooks)



Click ADD to continue



CARD 1, 2, 3: TimeTrax EZ allows up to 3 different card numbers to be assigned to each employee. Card 1 is a required field.

ENTER EMP#: NOTE: It is very important that you verify the Employee Number with your Payroll Service for proper exporting.

ENTER SSN: Employee Social Security Number.

BE SURE TO SAVE EACH EMPLOYEE RECORD.

- Last:** Enter Last Name (*required field*)
- First:** Enter First Name (*required field*)
- MI:** Enter Middle Initial
- Employee Group:** Assign the employee to the Employee Group he/she belongs to.
- Address 1:** Enter Street Address
- Address 2:** Enter Alternate Street Address
- City/St/Zip:** Enter City, State and Zip Code
- Home Phone:** Enter Home Phone
- Work Phone:** Enter Work Phone
- Hourly Pay Rate:** Enter Hourly Pay Rate
- Inactive:** Check box if employee terminates employment. (To view inactive employees, click VIEW INACTIVE EMPLOYEES on the bottom left side of the screen.)
- Anniversary:** The date that benefits commence
- Terminated:** The date the employee terminates employment
- Hired:** The date the employee was hired
- Notes:** Enter any pertinent employee data. To show/hide Employee Notes, select FILE – Show Employee Notes from the top menu bar.

VERTICAL ICON BAR



PAYROLL TAB:
The working Vertical Icon Bar where daily transactions occur.



SETUP TAB:
Operational setup handled initially through the wizard.

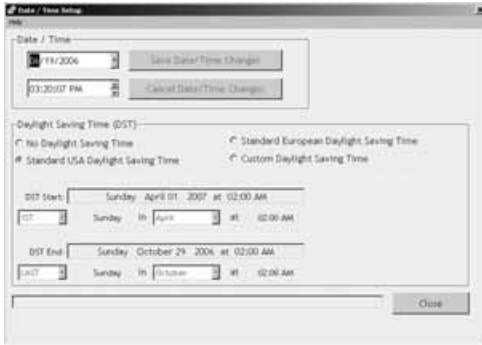


CONFIGURE TAB: Normal one time setup for systems administration.

These Icons can also be seen on the top menu bar by selecting FILE – *Show More Menus*.

CONFIGURE TAB

Date/Time Setup: This is the screen in which you will make any adjustments necessary to the TimeTrax EZ date and time, as well as Daylight Savings Time settings.



Preferences: This is the screen in which you will define the preferences for your system settings. Click SAVE and EXIT button when completed.

FORCE TEXT TO UPPERCASE: Select this option if you want all text entries to be UPPER CASE.

DISPLAY RUNNING TOTALS IN PUNCH DETAILS GRID: Select this option if you want to see cumulative totals in the Punch Details Window.

ENABLE WORKDAYS SETUP AND TRACK ABSENCES: Select this option if you want to have set workdays setup and Absences reported.

ALLOW AUTOMATIC APPROVAL OF SELECTED PAYROLL RECORDS DURING EXPORT: Select this option if you want to have payroll records automatically approved during exports.
NOTE: Pyramid does not recommend this option

DATE FORMAT: The format in which you want the date displayed in the software as well as on reports.

TIME TOTALS FORMAT: The format in which you want the times displayed in the software as well as on reports.

TIME OF DAY FORMAT: The format in which you want the hours displayed in the software as well as on reports.

AUTOMATIC BACKUP

This is the screen in which you will enable automatic backups for use when you exit the system. This will create a file and save it to a specified location of your choice.



ACTIVATE AUTOMATIC BACKUP: Select this option to turn on automatic backups.

BROWSE: Click this button to find the location you would like to store the backups. *NOTE: This can be on a network drive.*

BACKUP NOW: Immediate Backup.

APPLY: Click after screen changes.

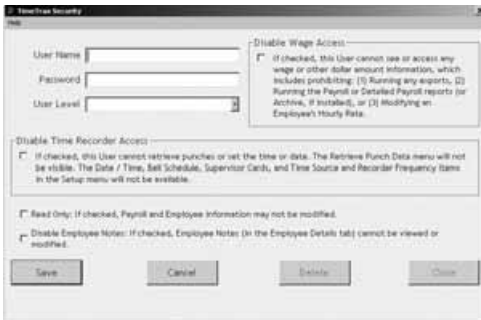
RESTORE FROM CURRENT BACKUP: Restores system database from the backup you just created.

RESTORE FROM PRIOR BACKUP: Restores system database from a backup previously created.

TIMETRAX SECURITY

This is the screen in which you will set User Names and Passwords, as well as security for anyone that logs into the TimeTrax EZ Software. The number of users is unlimited.

NOTE: Pyramid strongly recommends you create a user name and password immediately for data security.



USER NAME: Enter the desired login name.

PASSWORD: Enter the desired password for this user.

USER LEVEL: Enter the desired User Level. (Levels are explained below.)

DISABLE WAGE ACCESS: Select this option if you do not want this user to be able to view or change any wage information.

READ ONLY: Select this option if you only want to give this user READ ONLY access to the database.

DISABLE EMPLOYEE NOTES: Select this option if you do not want this user to have access to the notes information in the Employee Details Screen.

USER LEVELS

Restricted: These users can only access the following: Punch Details, Payroll Details, Employee Details, Assert Global Pay, Viewing Options, Date Time Setup Form, Reports/Exports, and Retrieve Punch Data.

Regular: These users can access all of the Restricted Users areas and the following: Supervisor Functions, Preferences, Backups, and Archive Reports.

Super: These users can access all of the Restricted and Regular Users areas and the following: Payroll Groups, Employee Groups, and Time Source and Sync Standards.

NOTE: Please remember to save each user record.

PAYROLL TAB Cont.

PUNCH EDITING

Insert Punch: To insert a punch, click the INSERT PUNCH button. Select the date of the punch and then select the time of the punch and choose SAVE.

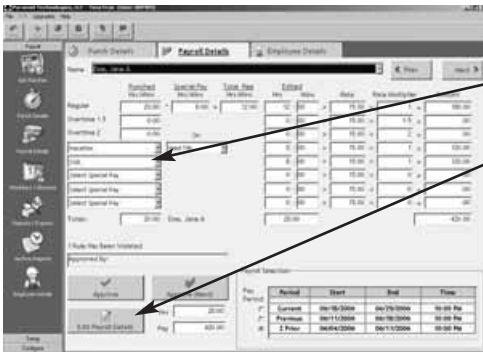
Edit Punch: Highlight the punch in question, click the EDIT PUNCH button, change the date and/or time of the punch, and choose SAVE.

Delete Punch: Highlight the punch in question, click the DELETE PUNCH button, and choose YES on the verification screen, if you are sure you want to delete this punch.

An audit trail is automatically produced for any modifications made to the original punch that will show up on screen as well as the timecard report.

PAYROLL DETAILS

Is the location in the program that allows you to enter exceptions to the employee payroll record as well as approving and un-approving employee payroll records. Most fields are pre-populated from both the Punch Detail and Employee Detail screens.



To enter exceptions click the EDIT PAYROLL DETAILS button and select which special pay you wish to add (the date will only pre-populate if special pay accrues towards overtime as selected in payroll groups). Enter the hours associated with the special pay in the edited hours field. Click SAVE.

Approve, Un-Approve, and Approve (Next): Once you approve the payroll you can only edit the payroll if you click the UN-APPROVE button first. Once you make your change you must click APPROVE again. The APPROVE (NEXT) button will approve the current employee, place the data into archive and bring you to the next employee record.

ASSERT GLOBAL SPECIAL PAY

In the circumstances where you wish to pay all employees or a group of employees the same number of hours (i.e., Independence Day @ 8 hours) go to FILE – Assert Global Special Pay.

Pay Period	Period	Start	End	Time
<input checked="" type="checkbox"/>	Current	06/18/2006	06/23/2006	10:00 PM
<input type="checkbox"/>	Previous	06/11/2006	06/16/2006	10:00 PM
<input type="checkbox"/>	2 Prior	06/04/2006	06/11/2006	10:00 PM

EMPLOYEE SELECTION: Choose either **EMPLOYEE BY GROUPS** in the Selected Payroll Group or **INDIVIDUAL EMPLOYEES** in the Selected Payroll Groups. If you choose **EMPLOYEE BY GROUPS** you are selecting every employee within the selected employee group. If you click on **INDIVIDUAL** you must click on each individual that you wish to assert the global special pay.

FOURTH/FIFTH SPECIAL PAY ENTRY: Choose the special pay category, the date (if the pay category accrues towards overtime you will be required to enter the date). If the pay category does not accrue towards overtime, you will be required to choose either the **PAY BY AMOUNT** (Dollar Value) or **PAY IN HOURS**.

You can exclude special pay for employees who were hired less than a user definable number of days.

WORKDAYS AND WORKWEEK

This is where you will setup the days that Individual Employees, Employees within Employee Groups, or Employees within Payroll Groups normally work.

ONLY THE REGULAR WORKWEEK: This will set **ONLY** the workweek template for a specified individual or group. You will enter what days make up your regular workweek.

ONLY THE PAY PERIOD WORKDAYS: This will set **ONLY** the workdays for a specified individual or group. You will enter the actual workweek; i.e., Jane could not work Monday but worked Saturday instead, you would uncheck Monday and check Saturday

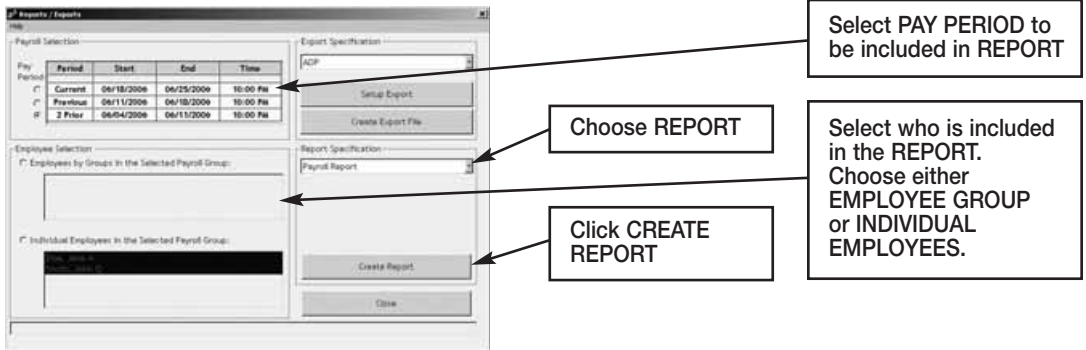
THE WORKDAYS AND WORKWEEKS: This will set template for the normally worked days (Workweek) for a specified individual or group **AND** the Workdays for a specified individual or group.

Click OK to save changes.

REPORTS / EXPORTS

REPORTS

When generating REPORTS you must select the PAY PERIOD you want included in the report, as well as the EMPLOYEE GROUP or INDIVIDUAL EMPLOYEES you want included in the REPORT. Then, select the REPORT you want to run.



Payroll Report: Shows total regular/overtime/special hours worked including wage information for the selected PAY PERIOD.

Time Card Report: Shows individual punches, special pay and running totals of regular and overtime hours worked for the selected pay period. Comments input by user on PUNCH DETAIL screen will appear on this report if selected.

Attendance Report: Shows absenteeism and missed punches for the selected pay period for TODAY, YESTERDAY or the SELECTED PAY PERIOD.

Punch Report: Shows the first IN and last OUT punch for a selected pay period for TODAY, YESTERDAY or the SELECTED PAY PERIOD.

Detailed Payroll Report: Combines the PAYROLL REPORT and TIME CARD REPORT. Comments input by user on PUNCH DETAIL screen will appear on this report if selected.

Card Report: Shows CARD NUMBER and the EMPLOYEE NAME the card is assigned to.

Card Report/Comprehensive: Shows CARD NUMBER and the EMPLOYEE NAME the card is assigned to as well as the employee status.

Employee Card Report: Shows the EMPLOYEE GROUP NAME, EMPLOYEE NAME, EMPLOYEE ID and all cards assigned.

Employee Contact Information: Shows NAME, ADDRESS, HOME PHONE and WORK PHONE.

Employee Seniority Report: Shows EMPLOYEE NAME, ID NUMBER, HIRE DATE and DAYS EMPLOYED. You can sort by either 30/60/90 or 410-DAY BANDS or BY NAME or BY DATE HIRED.

ARCHIVE REPORTS

Once a payroll record is approved, it is placed in Archive. Archive Reports allow you to run reports from the date TimeTrax EZ was installed up to and including the current date.

The screenshot shows the 'Archive Reports' dialog box. It has several sections: 'Employee Selection' with radio buttons for 'Employees by Groups in the Selected Payroll Group' and 'Individual Employees in the Selected Payroll Group'; 'Start/End Dates' with 'From' and 'To' date pickers; 'Active/Inactive Employees' with radio buttons for 'Show Only Active Employees in Report' and 'Show Active and Inactive Employees'; and 'Report Specification' with a list of report types including 'Pay History Report', 'Hours Summary Report', 'Attendance Report', 'Detailed Pay History Report', and 'Detailed Pay History w/o comments'. A 'Close' button is at the bottom. Three callout boxes point to specific elements: one points to the 'Employee Selection' radio buttons, another points to the 'Start/End Dates' pickers, and a third points to the 'Report Specification' list.

Select who is included in the REPORT. Choose either EMPLOYEE GROUP or INDIVIDUAL EMPLOYEES.

START/END DATES: Select the dates you want included in the REPORT.

ACTIVE/INACTIVE EMPLOYEES: Select just active or active and inactive to appear on REPORT.

Choose REPORT

Pay History Report: Shows a history of total regular/overtime/special hours worked including wage information for the selected PAY PERIOD.

Hours Summary Report: Shows a history of total PAY CATEGORY hours.

Attendance Report: Shows a history of absenteeism and missing punches.

Detail Pay History Report: Shows a history of the combined PAYROLL REPORT and TIME CARD REPORT. Comments input by user on PUNCH DETAIL screen will appear on this report.

Detail Pay History Report w/o Comments: Shows a history of the combined PAYROLL REPORT and TIME CARD REPORT. Comments input by user on PUNCH DETAIL screen will *not* appear on this report.

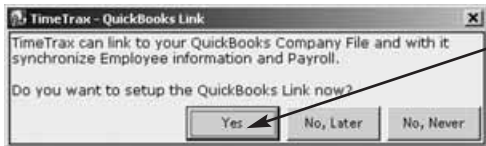
EMPLOYEE DETAILS

Click the Employee Details Icon to bring you to the EMPLOYEE DETAILS SCREEN covered in the initial TIMETRAX EZ SETUP WIZARD.

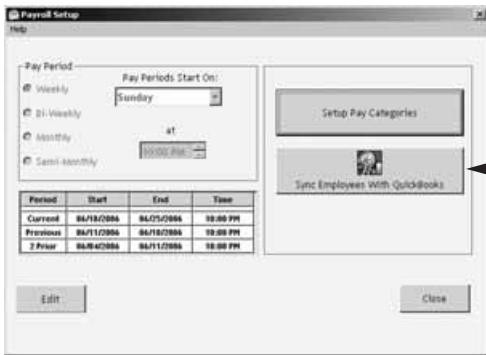
IMPORTING EMPLOYEES FROM QUICKBOOKS

This section discusses how to import employees from your QuickBooks system to TimeTrax EZ to eliminate the double entry of employee information.

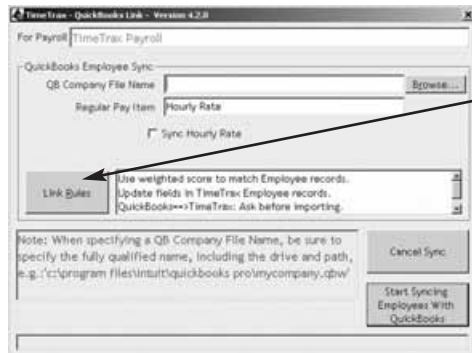
After you complete the setup of EMPLOYEE GROUPS, you will be presented with the following screen:



Click YES to continue.



Click SYNC EMPLOYEES WITH QUICKBOOKS to continue.



Click LINK RULES to setup how the system will import your employees.

After going through the LINK RULES (discussed below) click START SYNCING EMPLOYEES WITH QUICKBOOKS.



MATCH ONLY ON EMPLOYEE ID: The import will only match Employee ID's.

UNIQUELY MATCH: The import will do a cross reference on all employee data to ensure it is correct (Pyramid strongly recommends use of this option).

Check this option to have TimeTrax EZ update your QuickBooks Employee data.

Check this option to have QuickBooks update your TimeTrax EZ employee data. (PYRAMID STRONGLY RECOMMENDS USE OF THIS OPTION).



If ALWAYS IMPORT is selected you have the option to select an employee group that all new employees will be entered into by default.

ALWAYS IMPORT: When selected, this option will always import the QuickBooks employee into TimeTrax EZ without asking.

ASK BEFORE: When selected, the system will always ask before it imports any employee into TimeTrax EZ (Pyramid strongly recommends use of this option).

NEVER IMPORT: When selected, the system will never import any employees into TimeTrax EZ.



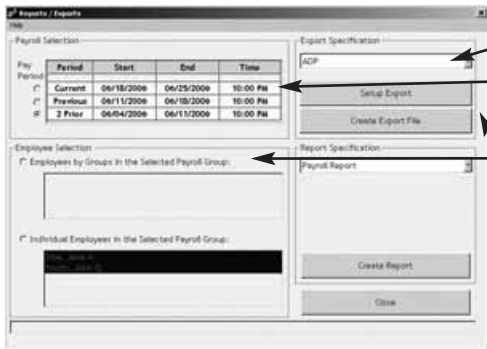
ALWAYS IMPORT: When selected, this option will always import the QuickBooks employee into TimeTrax EZ without asking.

ASK BEFORE: When selected, the system will always ask before it imports any employee into TimeTrax EZ.

NEVER EXPORT: When selected, the system will never export any employees from TimeTrax EZ (PYRAMID STRONGLY RECOMMENDS USE OF THIS OPTION).

ADP

The following are instructions for setting up and using the ADP EXPORT contained in the TimeTrax EZ. You will have to go into the REPORTS/EXPORTS tab to proceed with the export. It may also be necessary for you to setup the CATEGORY CODES within the SETUP – PAYROLL GROUPS – SETUP PAY CATEGORIES. (These codes will be provided to you from your payroll service provider). It is also required that individual payroll records are approved before export on the PAYROLL DETAILS SCREEN.



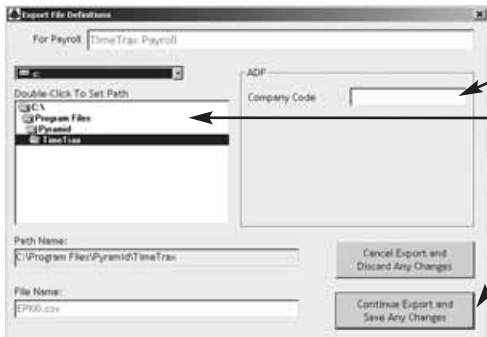
Choose EXPORT.

Select PAY PERIOD to be included in EXPORT.

Select who is included in the EXPORT. Choose either EMPLOYEE GROUP or INDIVIDUAL EMPLOYEES.

Choose SETUP or CREATE EXPORT. Setup is typically a one-time screen for setup – CREATE EXPORT will create the export with the setup options you have selected.

Setup/Create Export:



Enter your company code as provided by ADP.

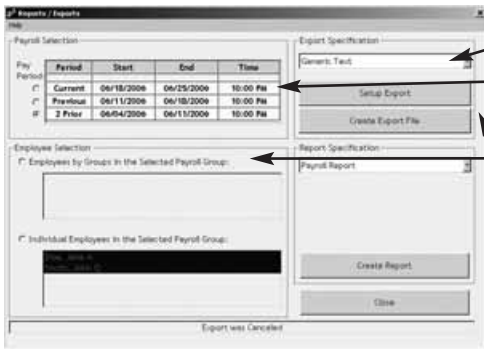
Select the drive and location where you want the export file to be saved.

Click CONTINUE EXPORT and SAVE ANY CHANGES to export and save the file where you selected.

Congratulations, you have successfully created and saved an ADP EXPORT FILE. You will need to contact ADP to obtain steps on how to import the file you created and saved into ADP software.

GENERIC TEXT

The following are instructions for setting up and using the GENERIC TEXT EXPORT contained in the TimeTrax EZ. You will have to go into the REPORTS/EXPORTS tab to proceed with the export. It may also be necessary for you to setup the CATEGORY CODES within the SETUP – PAYROLL GROUPS – SETUP PAY CATEGORIES. (These codes will be provided to you from your payroll service provider). It is also required that individual payroll records are approved before export on the PAYROLL DETAILS SCREEN.



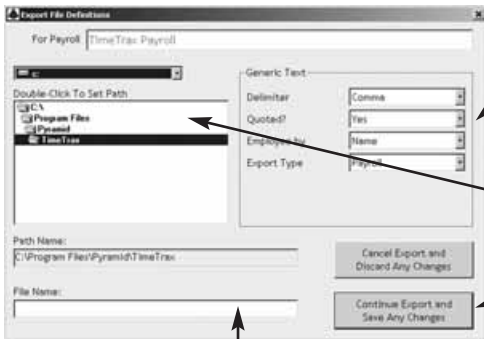
Choose EXPORT.

Select PAY PERIOD to be included in EXPORT.

Select who is included in the EXPORT. Choose either EMPLOYEE GROUP or INDIVIDUAL EMPLOYEES.

Choose SETUP or CREATE EXPORT. Setup is typically a one-time screen for setup – CREATE EXPORT will create the export with the setup options you have selected.

Setup/Create Export:



DELIMITER: Choose Comma, Tab, or Semi-Colon.

QUOTED: Choose Yes or No

EMPLOYEE BY: Choose Name, SSN, or EMP#

EXPORT TYPE: Choose Payroll or Punches.

Select the drive and location where you want the export file to be saved.

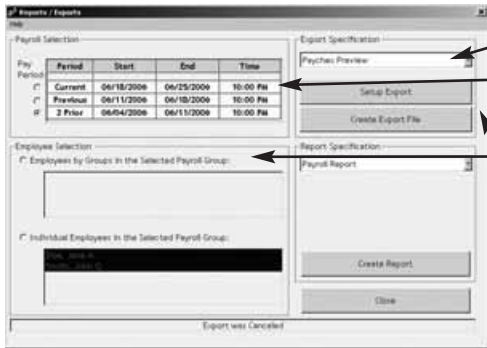
Click CONTINUE EXPORT and SAVE ANY CHANGES to export and save the file where you selected.

Type the desired name for this file including the extension file.

Congratulations, you have successfully created and saved a GENERIC TEXT EXPORT file. You will need to go to the location where you created and saved the file and import it into the software of your choosing.

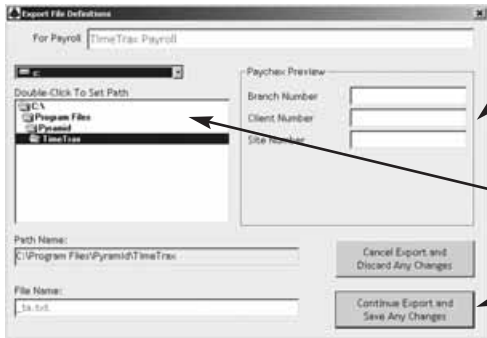
PAYCHEX PREVIEW

The following are instructions for setting up and using the PAYCHEX PREVIEW EXPORT contained in the TimeTrax EZ. You will have to go into the REPORTS/EXPORTS tab to proceed with the export. It may also be necessary for you to setup the CATEGORY CODES within the SETUP – PAYROLL GROUPS – SETUP PAY CATEGORIES. (These codes will be provided to you from your payroll service provider). It is also required that individual payroll records are approved before export on the PAYROLL DETAILS SCREEN.



- Choose EXPORT.
- Select PAY PERIOD to be included in EXPORT.
- Select who is included in the EXPORT. Choose either EMPLOYEE GROUP or INDIVIDUAL EMPLOYEES.
- Choose SETUP or CREATE EXPORT. Setup is typically a one-time screen for setup – CREATE EXPORT will create the export with the setup options you have selected.

Setup/Create Export:

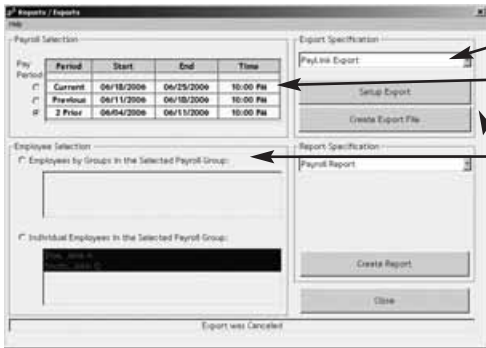


- PAYCHEX will provide BRANCH, CLIENT, and SITE NUMBER for this export.
- Select the drive and location you want the export file to be saved.
- Click CONTINUE EXPORT and SAVE ANY CHANGES to export and save the file where you selected.

Congratulations, you have successfully created and saved a PAYCHEX PREVIEW export file. You will need to contact PAYCHEX to obtain steps on how to import the file you created and saved into PAYCHEX software.

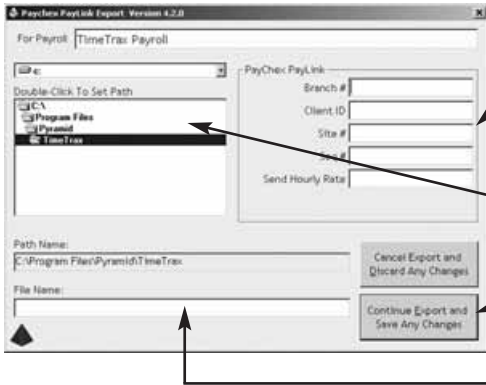
PAYCHEX PAYLINK

The following are instructions for setting up and using the PAYCHEX PAYLINK EXPORT contained in the TimeTrax EZ. You will have to go into the REPORTS/EXPORTS tab to proceed with the export. It may also be necessary for you to setup the CATEGORY CODES within the SETUP – PAYROLL GROUPS – SETUP PAY CATEGORIES. (These codes will be provided to you from your payroll service provider). It is also required that individual payroll records are approved before export on the PAYROLL DETAILS SCREEN.



- Choose EXPORT.
- Select PAY PERIOD to be included in EXPORT.
- Select who is included in the EXPORT. Choose either EMPLOYEE GROUP or INDIVIDUAL EMPLOYEES.
- Choose SETUP or CREATE EXPORT. Setup is typically a one-time screen for setup – CREATE EXPORT will create the export with the setup options you have selected.

Setup/Create Export:

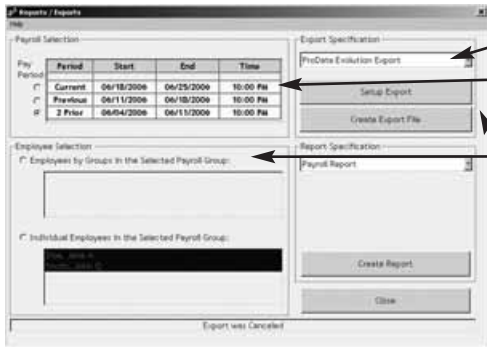


- PAYCHEX will provide BRANCH #, CLIENT ID, and SITE #, SEQ #, and whether or not to send hourly rate for this export.
- Select the drive and location where you want the export file to be saved.
- Click CONTINUE EXPORT and SAVE ANY CHANGES to export and save the file where you selected.
- PAYCHEX will provide you with the file name for this export.

Congratulations, you have successfully created and saved a PAYCHEX PAYLINK EXPORT file. You will need to contact PAYCHEX to obtain steps on how to import the file you created and saved into PAYCHEX software.

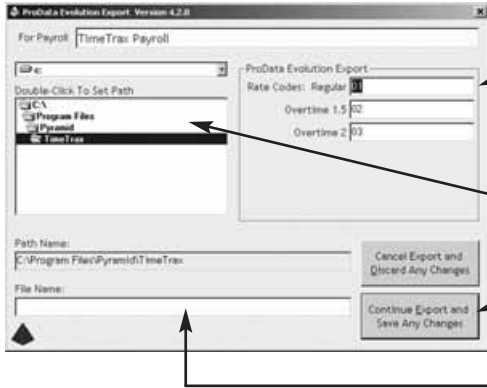
PRODATA EVOLUTION

The following are instructions for setting up and using the PRODATA EVOLUTION EXPORT contained in the TimeTrax EZ. You will have to go into the REPORTS/EXPORTS tab to proceed with the export. It may also be necessary for you to setup the CATEGORY CODES within the SETUP – PAYROLL GROUPS – SETUP PAY CATEGORIES. (These codes will be provided to you from your payroll service provider). It is also required that individual payroll records are approved before export on the PAYROLL DETAILS SCREEN.



- Choose EXPORT.
- Select PAY PERIOD to be included in EXPORT.
- Select who is included in the EXPORT. Choose either EMPLOYEE GROUP or INDIVIDUAL EMPLOYEES.
- Choose SETUP or CREATE EXPORT. Setup is typically a one-time screen for setup – CREATE EXPORT will create the export with the setup options you have selected.

Setup/Create Export:

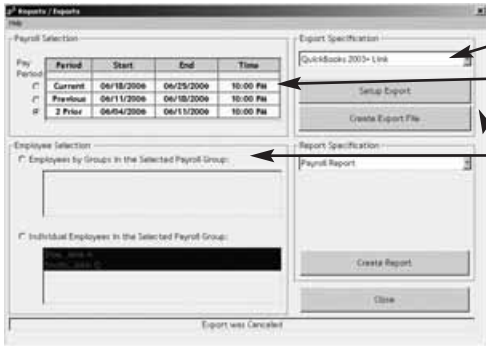


- ProData will provide RATE CODES for this export.
- Select the drive and location where you want the export file to be saved.
- Click CONTINUE EXPORT and SAVE ANY CHANGES to export and save the file where you selected.
- ProData will provide you with the file name for this export.

Congratulations, you have successfully created and saved a PRODATA EXPORT file. You will need to contact ProData to obtain steps on how to import the file you created and saved into ProData software.

QUICKBOOKS 2003+

The following are instructions for setting up and using the QUICKBOOKS 2003+ LINK EXPORT contained in the TimeTrax EZ. You will have to go into the REPORTS/EXPORTS tab to proceed with the export. It may also be necessary for you to setup the CATEGORY CODES within the SETUP – PAYROLL GROUPS – SETUP PAY CATEGORIES. (These codes will be provided to you from your payroll service provider). It is also required that individual payroll records are approved before export on the PAYROLL DETAILS SCREEN.

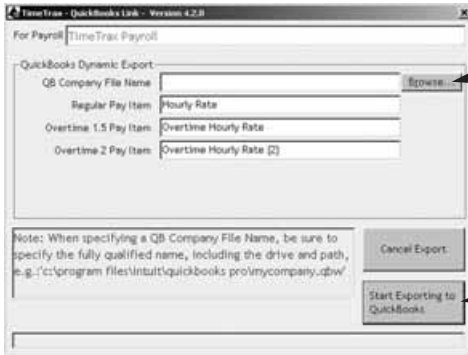


Choose EXPORT.

Select PAY PERIOD to be included in EXPORT.

Select who is included in the EXPORT. Choose either EMPLOYEE GROUP or INDIVIDUAL EMPLOYEES.

Choose SETUP or CREATE EXPORT. Setup is typically a one-time screen for setup – CREATE EXPORT will create the export with the setup options you have selected.



You will need to browse to find your QuickBooks Company File.

REGULAR PAY ITEM: This is what is referred to as regular time in QuickBooks.

OVERTIME 1.5 PAY ITEM: This is what is referred to as Overtime Rate in QuickBooks.

OVERTIME 2 PAY ITEM: This is what is referred to as Overtime Rate (2) in QuickBooks.

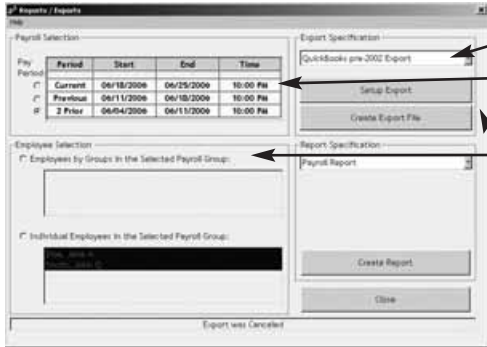
NOTE: It is imperative that you match EXACTLY what is in QuickBooks to these fields they are case sensitive as well.

Click START EXPORTING TO QUICKBOOKS.

Congratulations, you have successfully created and saved a QuickBooks export file. At this point you can go into QuickBooks, and see that all of the hours will be assigned to the proper employees, and you can go about processing payroll as you normally would.

QUICKBOOKS - 2002

The following are instructions for setting up and using the QUICKBOOKS PRE-2002 LINK EXPORT contained in the TimeTrax EZ. You will have to go into the REPORTS/EXPORTS tab to proceed with the export. It may also be necessary for you to setup the CATEGORY CODES within the SETUP - PAYROLL GROUPS - SETUP PAY CATEGORIES. (These codes will be provided to you from your payroll service provider). It is also required that individual payroll records are approved before export on the PAYROLL DETAILS SCREEN.

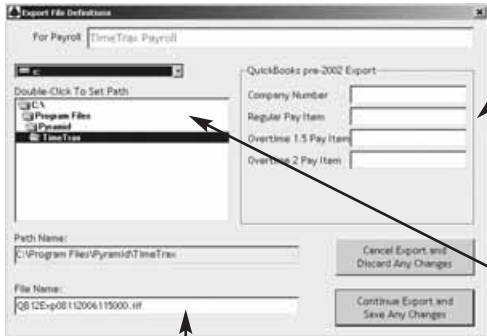


Choose EXPORT.

Select PAY PERIOD to be included in EXPORT.

Select who is included in the EXPORT. Choose either EMPLOYEE GROUP or INDIVIDUAL EMPLOYEES.

Choose SETUP or CREATE EXPORT. Setup is typically a one-time screen for setup - CREATE EXPORT will create the export with the setup options you have selected.



REGULAR PAY ITEM: This is what is referred to as regular time in QuickBooks.

OVERTIME 1.5 PAY ITEM: This is what is referred to as Overtime Rate in QuickBooks.

OVERTIME 2 PAY ITEM: This is what is referred to as Overtime Rate (2) in QuickBooks.

NOTE: It is imperative that you match EXACTLY what is in QuickBooks to these fields they are case sensitive as well.

Select the drive and location you want the export file to be saved.

QuickBooks will provide you with the file name for this export.

To obtain a COMPANY NUMBER, do the following:

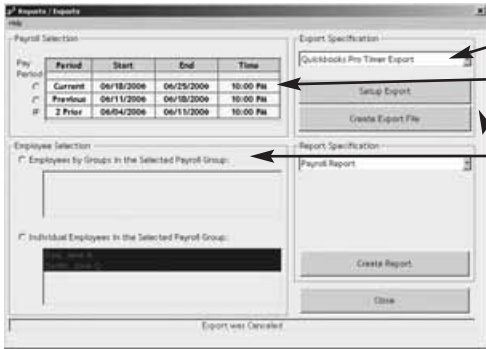
1. In the QuickBooks Tool Bar go into:
FILE
TIMER
EXPORT LISTS FOR TIMER
2. Click OK when the EXPORTS LISTS FOR TIMER SCREEN appears.
3. Save in whatever drive you choose to use.
4. Change the file name to something easily identifiable such as myqbcompany.if.
The name does not matter as long as the ending is .if.
5. Click on SAVE. You will get a message showing that your data has been exported successfully.
6. Minimize your QuickBooks Screen.
7. **In either Microsoft Explorer or Notepad, open the file you just created:**
Go into either Explorer or Notepad. Open the Drive you saved the file in. Change the File of Type to ALL FILES. Look for the .if with the name you assigned. Open the file.
8. In the export file you just opened, look on the top line for the field called COMPANYCREATETIME. Under that field name and slightly to its left is a 10-digit number. This is your QUICKBOOKS COMPANY NUMBER.
9. **Record your QuickBooks Company Number.**
It will always be needed to perform the export.

Once this is complete click CONTINUE EXPORT and save any changes.

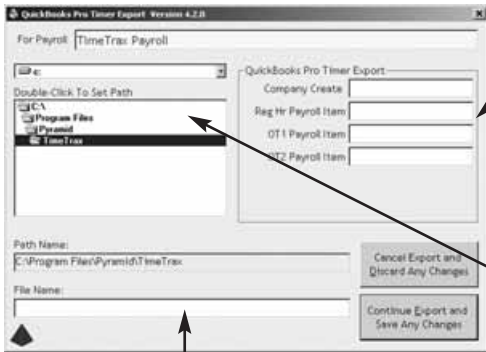
Congratulations, you have successfully created and saved a QUICKBOOKS EXPORT file. At this point you can go into QuickBooks, and see that all of the hours will be assigned to the proper employees, and you can go about processing payroll as you normally would.

QUICKBOOKS PRO TIMER EXPORT USERS

The following are instructions for setting up and using the QUICKBOOKS PRE-2002 LINK EXPORT contained in the TimeTrax EZ. You will have to go into the REPORTS/EXPORTS tab to proceed with the export. It may also be necessary for you to setup the CATEGORY CODES within the SETUP – PAYROLL GROUPS – SETUP PAY CATEGORIES. (These codes will be provided to you from your payroll service provider). It is also required that individual payroll records are approved before export on the PAYROLL DETAILS SCREEN.



- Choose EXPORT.
- Select PAY PERIOD to be included in EXPORT.
- Select who is included in the EXPORT. Choose either EMPLOYEE GROUP or INDIVIDUAL EMPLOYEES.
- Choose SETUP or CREATE EXPORT. Setup is typically a one-time screen for setup – CREATE EXPORT will create the export with the setup options you have selected.



- REGULAR PAY ITEM: This is what is referred to as regular time in QuickBooks.
- OVERTIME 1.5 PAY ITEM: This is what is referred to as Overtime Rate in QuickBooks.
- OVERTIME 2 PAY ITEM: This is what is referred to as Overtime Rate (2) in QuickBooks.
- NOTE: It is imperative that you match EXACTLY what is in QuickBooks to these fields (they are case sensitive as well).
- Select the drive and location where you want the export file to be saved.
- Select a file name for this export.

To obtain a CREATE TIME, do the following:

1. In the QuickBooks Tool Bar go into:
FILE
TIMER
EXPORT LISTS FOR TIMER
2. Click OK when the EXPORTS LISTS FOR TIMER SCREEN appears.
3. Save in whatever drive you choose to use.
4. Change the file name to something easily identifiable such as myqbcompany.if.
The name does not matter as long as the ending is .if.
5. Click on SAVE. You will get a message showing that your data has been exported successfully.
6. Minimize your QuickBooks Screen.
7. **In either Microsoft Explorer or Notepad, open the file you just created:**
Go into either Explorer or Notepad. Open the Drive you saved the file in. Change the File of Type to ALL FILES. Look for the .if with the name you assigned. Open the file.
8. In the export file you just opened, look on the top line for the field called COMPANYCREATETIME. Under that field name and slightly to its left is a 10-digit number. This is your QUICKBOOKS COMPANY NUMBER.
9. **Record your QuickBooks Company Number.
It will always be needed to perform the export.**

Once this is complete click CONTINUE EXPORT and save any changes.

Congratulations, you have successfully created and saved a QUICKBOOKS EXPORT file. At this point you can go into QuickBooks, and see that all of the hours will be assigned to the proper employees, and you can go about processing payroll as you normally would.

TROUBLESHOOTING GUIDE

GENERAL TROUBLESHOOTING TIPS

Software is acting in an unexpected manner:

- Restart TimeTrax and see if that corrects the problem.
- Reboot your computer and re-launch TimeTrax.
- Make sure you meet the minimum system requirements listed in the MINIMUM SYSTEM REQUIREMENTS section of this manual.

Software cannot locate the time recorder

Following is an example of one of the messages you may see in TimeTrax EZ:



STEP 1: Verify that the hardware is set up correctly.

- Pyramid TimeTrax EZ units require a COM Port for connection.
- You must first attach the DB9 (included in shipment) to your PC.
- Check to see if the wider side with holes will connect into an available port on the PC.
- If it does, screw it in securely.
- Connect the white Cat5 cable (included in the shipment) to DB9 and connect the other end of the white Cat5 cable to the port in the back of the time clock.

NOTE: The WHITE cable should never connect directly to the computer. It should always connect to the DB9 and the DB9 should connect to the computer.

If the DB9 does not fit into a port on the computer, you will need a USB to RS232 adapter to connect the DB9 to your computer. You can purchase this adapter through Pyramid, P/N 41685.

STEP II: Test that Windows, COM Port and DB9 are working properly.

- If the hardware is setup correctly, you will need to connect the loop-back plug included in the shipment to the DB9 that is plugged into your computer.
- Click the Reconnect Button on your screen.
- If the loop back plug is found, it indicates that Windows, the COM Port and the adapter are working properly.

Iia: Test that the Cable is working properly.

- Unplug the white Cat5 cable from the TimeTrax EZ unit and from the back of the PC.
- Plug them both back in, in the reverse order.
- If this still does not work, replace the white cable with another Ethernet or Cat5 cable.

Iib: If the LCD displays time and date, test the Time Clock.

- First, try unplugging the unit and letting it sit for a few minutes, then plug it back into the wall socket.
- If it is still not connecting correctly, you will need to reset the clock.

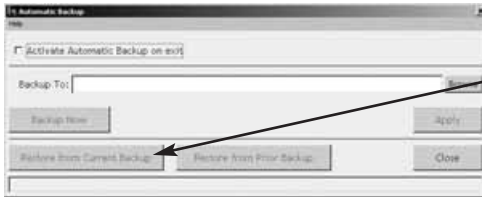
NOTE: Resetting the time clock erases all stored punches. To reset the clock, unplug the unit and hold down the 0 key while plugging it back in. If it does not connect at this point, the clock needs to be replaced.

Step III: Loop Back Plug Not Found

- If the loop back plug is not found, try connecting a USB to RS232 adapter (Pyramid P/N 41685) into the PC and then connecting the DB9 to the USB adapter.
- If this still does not work, it may be necessary to contact your computer support personnel.

Restoring Database From a Crashed Hard Drive

- Reload your TimeTrax EZ Software as shown in the *Installing the Software* section of this manual. *Note: Please make sure that you are installing the same version that you are currently running.*
- If you have AUTOMATIC BACKUP activated, go to CONFIGURE TAB on the VERTICAL ICON BAR and Click on AUTOMATIC BACKUP.

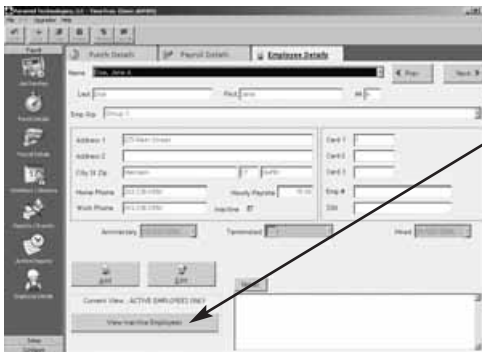


Choose RESTORE FROM CURRENT BACKUP.

- This will restore all data from the last backup. If you have punches in the TimeTrax EZ unit that have not been downloaded, download them as described in the PAYROLL TAB, GET PUNCHES SECTION of this manual.
- If you do not have a backup, you will need to reinstall your software and go thru the entire setup process beginning with the TimeTrax EZ Setup Wizard.
- Once this is completed, you must perform an EMERGENCY PUNCH DOWNLOAD as described in the following section.

Emergency Punch Download:

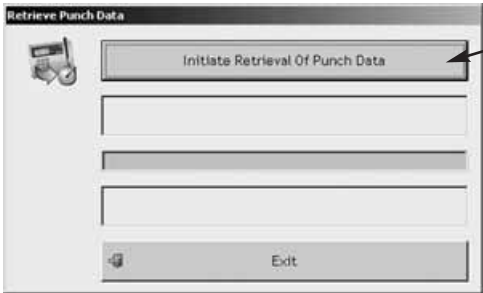
- In the event of a catastrophic database failure due to damage from viruses, hard drive crash etc . . . you can retrieve the last 6,000 punches by initiating an EMERGENCY PUNCH DOWNLOAD.
- Before you attempt to do this, please note that if you have any inactive employees contained in the last 6,000 punches, you will need to go to the EMPLOYEE DETAILS ICON on the PAYROLL TAB on the VERTICAL ICON BAR to click on the VIEW INACTIVE EMPLOYEES TAB so those punches will not come through as unassigned.
- If you re-assigned a card number to a new employee, all punches from both the previous and new employee will go to the card number. You will need to manually review the duplicate card number and determine which punches should be deleted. Pyramid does not recommend reusing a card number for at least 3 pay periods.



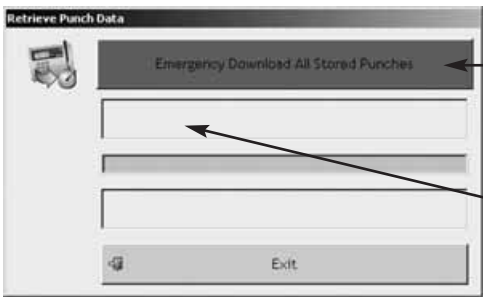
Click VIEW INACTIVE EMPLOYEES.

For each employee, go to edit button and uncheck the INACTIVE check box located under HOURLY PAY RATE.

From the PAYROLL ICON on the VERTICAL ICON BAR, click GET PUNCHES.



Press the F12 key on your keyboard and the screen below will appear.



Click EMERGENCY DOWNLOAD ALL STORED PUNCHES.

Once the emergency download is complete, make sure you go back and make the employees that you activated, inactive again. Click HIDE THE INACTIVE EMPLOYEES Tab.

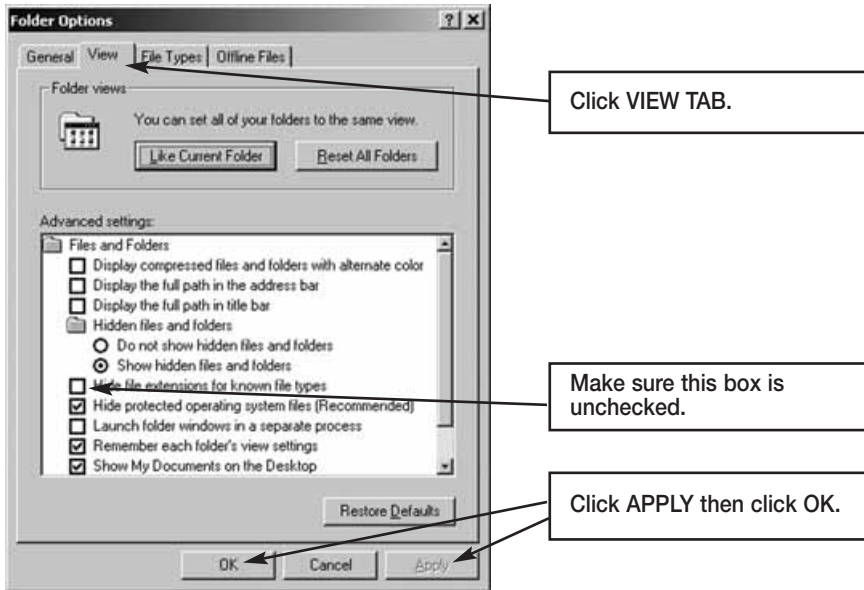
Note: Pyramid highly recommends the use of surge protectors to prevent data loss. In the event that you are in an area where power surges are common, Pyramid recommends the use of a battery backup system.

In the event that you cannot recapture your data using these methods, please contact Pyramid for additional support.

Moving TimeTrax EZ From One Computer to Another:

- Reload your TimeTrax EZ software as shown in the *Installing the Software* section of this manual. *Note: Please make sure that you are installing the same version that you are currently running.*
- You will need to copy the .mdb files and the pyramid.ini file from the TimeTrax folder located in C:\Program Files\Pyramid directory.
 1. Right click on the START button of your desktop and select EXPLORE.
 2. Navigate to C:\Program Files\Pyramid\TimeTrax.
 3. From VIEW TAB, click DETAILS.
 4. From TOOLS TAB, click FOLDER OPTIONS.

5. Select TYPE TO SORT by type of file.
6. Select pyramid.ini and all .mdb files.
7. Right-click and copy files.



For Non-Network PC users:

1. Right-click on your desktop.
2. Select NEW and FOLDER.
3. Open the folder, right-click and paste files.
4. Transfer files to the new computer.
5. Navigate to the TimeTrax directory and paste the files.

Examples of transfer methods are: email attachment (Pyramid does not recommend this method due to the size of the files), Zip Disk, or burn the files onto a CD or DVD.

For Network PC users:

Navigate to the TimeTrax directory of the computer you are moving the files to and paste the files.

QuickBooks Does Not Display Punch Information After Export

Time tracking data is missing for ALL employees:

From QuickBooks Program:

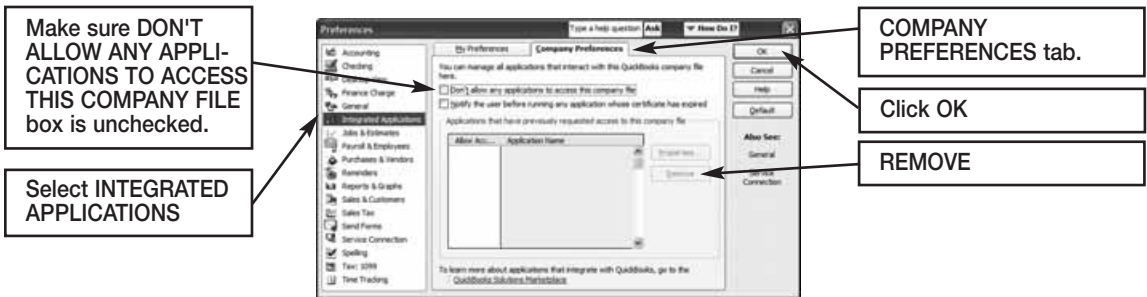
1. Choose EDIT.
2. PREFERENCES
3. TIME TRACKING
4. Tab to COMPANY PREFERENCES
5. DO YOU TRACK TIME? Check YES
6. Go to EMPLOYEES
7. Click on (any) 1 Employee
8. Change the Drop Down Box to PAYROLL AND COMPENSATION INFORMATION
9. Make sure all of the EARNINGS are set up
10. Make sure USE TIME DATA TO CREATE PAYCHECKS is checked

Do this for each employee and then export again.

If this does not work, you must reinstall the QuickBooks link in TimeTrax EZ. In order to do this, you must be in single user mode and logged in as ADMIN in QuickBooks to complete this step.

STEP 1: Remove the TimeTrax EZ application from QuickBooks.

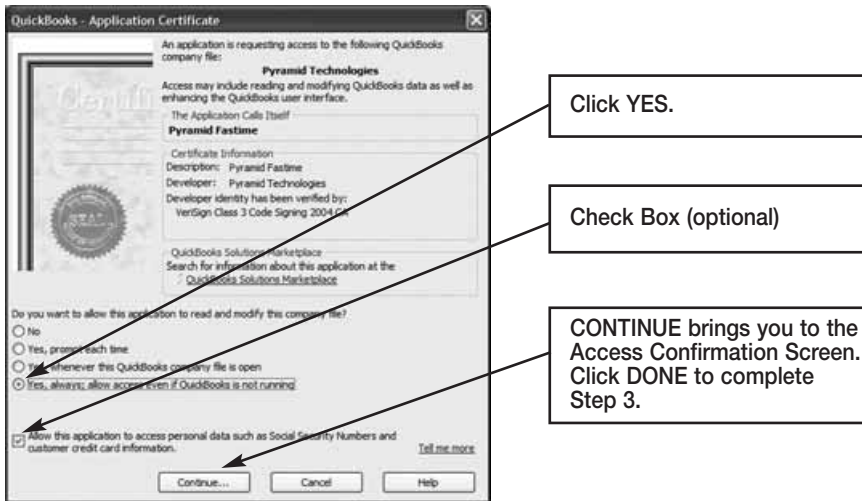
From the Edit Menu, select PREFERENCES (For 2004 edition and earlier, you reach PREFERENCES by accessing the FILE MENU) and click on COMPANY PREFERENCES tab and then INTEGRATED APPLICATIONS. Select PYRAMID TIMETRAX, Click REMOVE then Click OK.



STEP 2: Copy new QuickBooks 2003+Link_.exe from the original CD provided in shipment to C:\Program Files\Pyramid\TimeTrax.

STEP 3: Re-launch TimeTrax program.

The QuickBooks – Application Certificate Screen appears. Make sure YES, always allow access even if QuickBooks is not running is checked, and optionally ALLOW this application to access personal data such as Social Security Number and customer credit card information box is checked. Click CONTINUE and DONE on the Access Confirmation Screen.



Time tracking data is missing for SOME employees:

From QuickBooks Program:

- Go to EMPLOYEES
- Click on an affected EMPLOYEE
- Change the Drop Down Box to PAYROLL AND COMPENSATION INFORMATION
- Make sure all of the EARNINGS are set up
- Make sure USE TIME DATA TO CREATE PAYCHECKS is checked.

Do this for each affected employee and then export again.

For further technical support, Pyramid recommends that you contact Intuit (QuickBooks).

WARRANTY INFORMATION

RETURNS

Returns on non-defective equipment can be made within 30-days of purchase for a full refund after inspection. Returns on non-defective equipment made after 30-days, but within 60-days of shipping will be accepted after inspection and are subject to a 15% restocking fee. Returns after 60-days will not be accepted.

LIMITED HARDWARE WARRANTY

- Pyramid warrants the TimeTrax EZ equipment to the original user against defective material or workmanship for a period of 1-year from the date of purchase. Proof of date of purchase is required for warranty service on this product.
- Pyramid responsibility under this warranty is limited to the repair or replacement of the defective part or parts, and repair or replacement is the sole discretion of Pyramid.
- For Return Shipments to Pyramid, the product must be shipped in its original carton or equivalent, fully insured with shipping charges prepaid. Pyramid will not assume any responsibility for loss or damage incurred in shipping.
- Pyramid reserves the right to determine whether the parts failed because of defective material, workmanship, or other causes.
- Failure caused by accident, alteration, misuse or improper packaging of returned unit is not covered by this warranty.
- Any repair to the equipment other than by Pyramid voids the warranty.
- Users in countries other than the USA should contact the Dealer from whom the unit was purchased.
- The rights under this warranty are limited to the original user and may not be transferred to subsequent users.
- Extended Hardware Warranties are available by calling Customer Support at 888-479-7264 for more information.

LIMITED SOFTWARE TECHNICAL SUPPORT

Pyramid warrants the software and provides technical support assistance for a period of 90-days from the date of purchase. Extended warranties/technical support contracts can be purchased separately through Pyramid. Call Customer Support at 888-479-7264 for more information.

REGISTERING TIMETRAX EZ

Please be sure to complete the product registration form enclosed in your shipment to activate your **Technical Support/Hardware Warranty** or register online at www.pyramidtechnologies.com.

PARTS LIST

PART NUMBER	QTY	DESCRIPTION
TIMETRAXEZ	1	TimeTrax EZ Master Kit
TIMETRAXEZW1H	1	1-Year Extended Hardware Warranty
TIMETRAXEZW1S	1	1-Year Extended Technical Support
41400	1	Adapter RJ45f to DB9
41685	1	Converter USB to RS232
500-4	1	Badge Card Rack Capacity 40
41269	1	50' White Flat RJ45 Cable
41314	1	100' White Flat RJ45 Cable
41313	1	Splice RJ45 STE111 In-Line
41287	1	Mounting Bracket Release Key
41302S	1	Swipe Cards & Software #1-25
41303S	1	Swipe Cards & Software #26-50
41304S	1	Swipe Cards & Software #51-100
41302	1	Swipe Cards Only #1-25
41303	1	Swipe Cards Only #26-50
41304	1	Swipe Cards only #51-100

INDEX

7
7th Day Worked Overtime 10

A
Address 11
ADP 22
Advanced Employee Groups 10
Anniversary 11
Approval of Payroll Records 16
Approve 16
Archive Reports 19
Assert Global Special Pay 17
Attendance Report 19
Audit Trail 16
Automatic Backup 14

B
Backup 14

C
Card Report 18
Category Code 8
COM Port 33
Configure Tab 13
Contact Information Report 19

D
Daily Overtime 9
Date Format 13
Date/Time 13
Daylight Savings Time 13
DB9 33
Delete Punch 16
Detail Pay History Report 19
Detailed Payroll Report 22

E
Edit Punch 16
Emergency Punch Download 34
Employee Details 11
Employee Export 22
Employee Group 10
Employee Groups 8
Employee Import 20
Employee Match 21
Enable Lunch Warnings 10

F
F12 key 35
Features 3
Filter-Out Punches 9
first name 11
Fourth/Fifth Special Pay 17

G
Generic Text 23
Get Punches 15
Global Special Pay 17
Grace Window 10

H
Hardware 32
Hired 11
Home Phone 11
Hourly Pay Rate 11
Hours Summary Report 19

I
Importing Employees
from Quickbooks 20
Inactive 11
Inactive Employees 38
Initial Communication Form 6
Insert Punch 16
Installing the Software 7
Introduction 3

L
last name 11
Limited Hardware Warranty 42
Link Rules 24
Log In Window 6
Loop Back Plug 33
Lunch Rules 10

M
Middle Initial 11
Minimum System Requirements 1
Missed Out 15
Missed Punch 9
Monthly/Semi-Monthly Pay Period 9
Moving TimeTrax EZ From
One Computer to Another 35

N
Network PC Users 36
Non-Network PC Users 36
Notes 11

P
Password 6, 14
Pay 19
Pay Categories 8
Pay History Report 19
Pay Interval Round 9
Pay Period 7
Paychex Paylink 25
Paychex Preview 24
Payroll Details 16
Payroll Report 18, 19
Payroll Setup 7
Payroll Tab 15
Preferences 37
Prodata Evolution 26
Punch Details 15
Punch Editing 16
Punch Report 18

Q
QuickBooks – Application
Certificate Screen 38
QuickBooks 2003+Link_.exe 38

QuickBooks does not Display Punch
Information After Export 37
QuickBooks Pro Timer 30

R
Rate Multiplier 8
Regular 14
Reports 18
Reports/Exports 18, 19
Restore from Current Backup 14
Restore from Prior Backup 14
Restoring Database 33
Restricted 14
Returns 39
Running Totals 13

S
Saturday Overtime 10
Seniority Report 19
Setup Tab 15
Shift Warnings 10
Software Cannot Locate
the Time Recorder 32
Special Pay 17
Sunday Overtime 10
Super 14
Sync 15
Sync Employees with Quickbooks 20
System Crash 33, 34

T
Technical Support 39
Terminated 11
Time Card Report 18, 19
Time of Day 13
Time Source 15
Time Totals 13
Time Tracking Data is Missing 37
TimeTrax EZ Setup
Wizard 7, 15, 19, 34
TimeTrax Security 14
Track Absence 13
Troubleshooting Guide 32

U
Un-Approve 16
Uppercase 13
User Levels 14
User Name 6
Using Employee Cards 3
Using the Time Recorder 3

V
Vertical Icon Bar 12

W
Weekly Overtime 9
What's In The Box? 1
Windows 33
Workday Setup 13
Workdays 17
Workweek 17